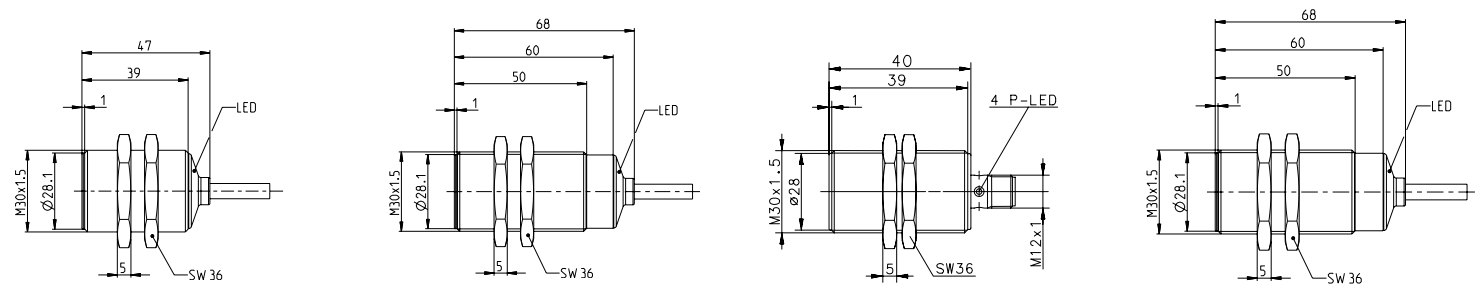


INDUCTIVE SENSORS Type M30



Type	M30	M30	M30	M30
Enclosure material	CuZn39Pb3	CuZn39Pb3	CuZn39Pb3	CuZn39Pb3
Type of installation	flush	flush	flush	flush
Nominal sensing distance	10 mm	10 mm	10 mm	10 mm
Type of connection	Cable 2 m	Cable 2 m	Connector M12	Connector M12
Special feature	Short type	Standard type	Short type	Standard type
PNP DC NO contact	6532907001 KIB-M30PS/010-KL2VI	6532907002 KIB-M30PS/010-KL2I	6532907003 KIB-M30PS/010-KLS12VI	6532907004 KIB-M30PS/010-KLS12I
PNP DC NC contact	6532707001 KIB-M30PÖ/010-KL2VI	6532707002 KIB-M30PÖ/010-KL2I	6532707003 KIB-M30PÖ/010-KLS12VI	6532707004 KIB-M30PÖ/010-KLS12I
NPN DC NO contact	6532307001 KIB-M30NS/010-KL2V	6532307002 KIB-M30NS/010-KL2	6532307003 KIB-M30NS/015-KLS12V	6532307004 KIB-M30NS/010-KLS12
NPN DC NC contact	6532107001 KIB-M30NÖ/010-KL2V	6532107002 KIB-M30NÖ/010-KL2	6532107003 KIB-M30NÖ/010-KLS12V	6532107004 KIB-M30NÖ/010-KLS12
Technical data				
Rated operating voltage range	U_B 10–30 VDC	10–30 VDC	10–30 VDC	10–30 VDC
Rated operating current	I_e ≤ 200 mA	≤ 200 mA	≤ 200 mA	≤ 200 mA
Max. switching voltage	F 300 Hz	300 Hz	300 Hz	300 Hz
Short circuit-protection	cyclic	cyclic	cyclic	cyclic
Function/operating voltage indicator	LED/–	LED/–	LED/–	LED/–
Mechanical data				
Ambient temperature (min/max)	–25°C/+70°C	–25°C/+70°C	–25°C/+70°C	–25°C/+70°C
Protection class in accordance with IEC 529, EN 60529	IP67	IP67	IP67	IP67
Connection	3 x 0.34 mm ²	3 x 0.34 mm ²	M12 x 1	M12 x 1
Approvals				

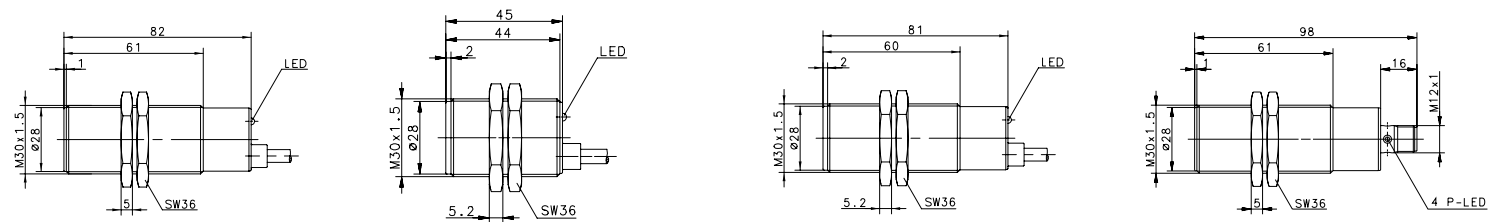
= IO-Link





Type	M30	M30	M30	M30
Enclosure material	CuZn39Pb3	PA, red	PA, red	CuZn39Pb3
Type of installation	flush	flush	flush	flush
Nominal sensing distance	10 mm	10 mm	10 mm	10 mm
Type of connection	Cable 2 m	Cable 3 m	Cable 2 m	Connector M12
Special feature	Temperature	Short type		Temperature
PNP	DC	NO contact	6502907013 KIB-M30PS/010-KL2PUT	6502922001 KIB-T30PS/010-KL3V
PNP	DC	NC contact		6502722708 KIB-T30PÖ/010-KL2
NPN	DC	NO contact		
NPN	DC	NC contact		
Technical data				
Rated operating voltage range	U_B	10–30 VDC	10–60 VDC	10–60 VDC
Rated operating current	I_e	≤ 200 mA	≤ 200 mA	≤ 200 mA
Max. switching voltage	F	300 Hz	300 Hz	300 Hz
Short circuit-protection		cyclic	cyclic	cyclic
Function/operating voltage indicator		LED/–	LED/–	LED/–
Mechanical data				
Ambient temperature (min/max)		–40°C/+100°	–25°C/+70°C	–25°C/+70°C
Protection class in accordance with IEC 529, EN 60529		IP67	IP67	IP67
Connection		3 x 0.5 mm ²	3 x 0.75 mm ²	3 x 0.5 mm ²

Approvals

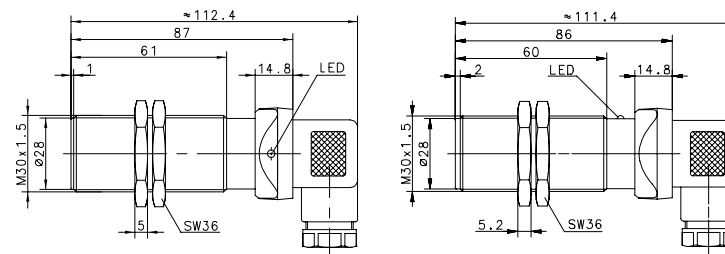


INDUCTIVE SENSORS Type M30



Type	M30	M30
Enclosure material	CuZn39Pb3	PA, red
Type of installation	flush	flush
Nominal sensing distance	10 mm	10 mm
Type of connection	DIN Connector	DIN Connector
Special feature		
PNP DC NO contact	6502939001 KIB-M30PS/010-KLSD	
PNP DC NC contact	6502739001 KIB-M30PÖ/010-KLSD	
NPN DC NO contact		
NPN DC NC contact		
PNP/NPN DC NO/NC prog.		6502822862 KIB-T30PP/010-KLSD
Technical data		
Rated operating voltage range	U_B 10–60 VDC	10–60 VDC
Rated operating current	I_e ≤ 200 mA	≤ 200 mA
Max. switching voltage	F 300 Hz	300 Hz
Short circuit-protection	cyclic	cyclic
Function/operating voltage indicator	LED/–	LED/–
Mechanical data		
Ambient temperature (min/max)	–25°C/+70°C	–25°C/+70°C
Protection class in accordance with IEC 529, EN 60529	IP65	IP65
Connection	Plug connector DIN EN 175301-803	Plug connector DIN EN 175301-803

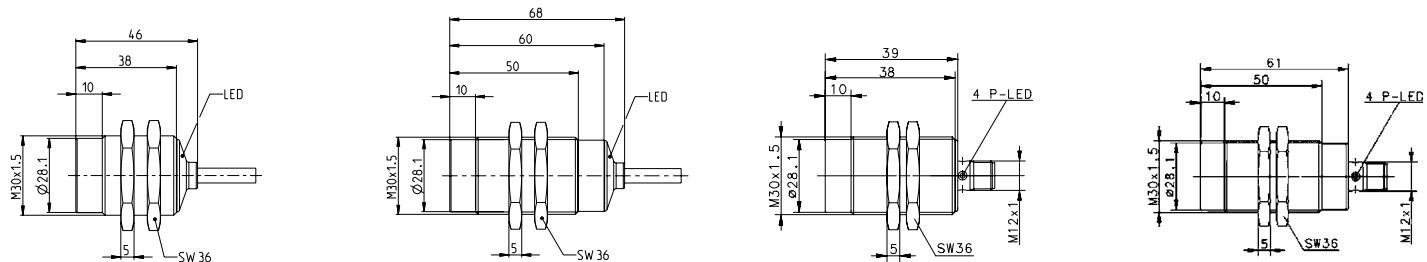
Approvals





Type	M30	M30	M30	M30		
Enclosure material	CuZn39Pb3	CuZn39Pb3	CuZn39Pb3	CuZn39Pb3		
Type of installation	non-flush	non-flush	non-flush	non-flush		
Nominal sensing distance	15 mm	15 mm	15 mm	15 mm		
Type of connection	Cable 2 m	Cable 2 m	Connector M12	Connector M12		
Special feature	Short type	Standard type	Short type	Standard type		
PNP	DC	NO contact	6532908001 KIN-M30PS/015-KL2VI	6532908002 KIN-M30PS/015-KL2I	6532908003 KIN-M30PS/015-KLS12VI	6532908004 KIN-M30PS/015-KLS12I
PNP	DC	NC contact	6532708001 KIN-M30PÖ/015-KL2VI	6532708002 KIN-M30PÖ/015-KL2I	6532708003 KIN-M30PÖ/015-KLS12VI	6532708004 KIN-M30PÖ/015-KLS12I
NPN	DC	NO contact	6532308001 KIN-M30NS/015-KL2V	6532308002 KIN-M30NS/015-KL2	6532308003 KIN-M30NS/015-KLS12V	6532308004 KIN-M30NS/015-KLS12
NPN	DC	NC contact	6532108001 KIN-M30NÖ/015-KL2V	6532108002 KIN-M30NÖ/015-KL2	6532108003 KIN-M30NÖ/015-KLS12V	6532108004 KIN-M30NÖ/015-KLS12
Technical data						
Rated operating voltage range	U_B	10–30 VDC	10–30 VDC	10–30 VDC	10–30 VDC	10–30 VDC
Rated operating current	I_e	≤ 200 mA	≤ 200 mA	≤ 200 mA	≤ 200 mA	≤ 200 mA
Max. switching voltage	F	100 Hz	100 Hz	100 Hz	100 Hz	100 Hz
Short circuit-protection		cyclic	cyclic	cyclic	cyclic	cyclic
Function/operating voltage indicator		LED/–	LED/–	LED/–	LED/–	LED/–
Mechanical data						
Ambient temperature (min/max)		–25°C/+70°C	–25°C/+70°C	–25°C/+70°C	–25°C/+70°C	–25°C/+70°C
Protection class in accordance with IEC 529, EN 60529		IP67	IP67	IP67	IP67	IP67
Connection		3 x 0.34 mm ²	3 x 0.34 mm ²	M12 x 1	M12 x 1	M12 x 1
Approvals						

= IO-Link



INDUCTIVE SENSORS Type M30



Type	M30	M30	M30	M30
Enclosure material	PA, red	PA, red	CuZn39Pb3	CuZn39Pb3
Type of installation	non-flush	non-flush	non-flush	non-flush
Nominal sensing distance	15 mm	15 mm	15 mm	40 mm
Type of connection	Cable 2 m	Connector	DIN Connector	Cable 2 m
Special feature				Sensing distance
PNP	DC	NO contact	6502923981 KIN-T30PS/015-KL2	6502923002 KIN-T30PS/015-KS12
PNP	DC	NC contact		6502935001 KIN-M30PS/015-KLSD
NPN	DC	NO contact		6502908009 KIN-M30PS/040-KL2E
NPN	DC	NC contact		
Technical data				
Rated operating voltage range	U_B	10–60 VDC	10–60 VDC	10–60 VDC
Rated operating current	I_e	≤ 200 mA	≤ 200 mA	≤ 200 mA
Max. switching voltage	F	100 Hz	100 Hz	≤ 100 Hz
Short circuit-protection		cyclic	cyclic	cyclic
Function/operating voltage indicator		LED/–	LED/–	LED/–
Mechanical data				
Ambient temperature (min/max)		–25°C/+70°C	–25°C/+70°C	–25°C/+70°C
Protection class in accordance with IEC 529, EN 60529		IP67	IP67	IP65
Connection		3 x 0.5 mm ²	M12 x 1	Plug connector DIN EN 175301-803

